

SCC-C6453/C6455/C7453/C7455 SCC-C4253/C4255/C4353/C4355

43x Optical Zoom High SmartDome Camera / 43x Optical Zoom Lens Camera

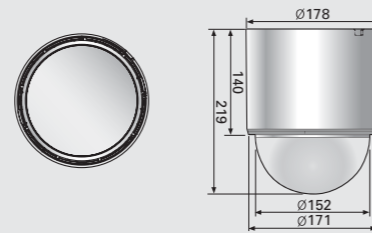
I Features

SCC-C6453 / C6455 / C7453 / C7455

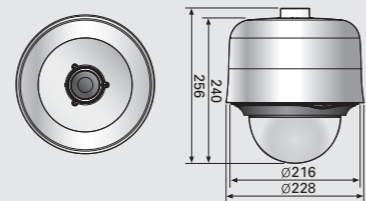
- 1/4" SONY 410K/470K Pixels Ex-View HAD PS CCD
- 43x(f=3.2~138.5mm) Optical & 16x(0.1step) Digital Zoom
- High Resolution : 600 TV Lines
- Min. illumination 0.0007 Lux (F1.2, 15 IRE, Sens-up 512x, Color)
0.00007 Lux (F1.2, 15 IRE, Sens-up 512x, B/W)
- 0~360° Endless Pan, -6~186° Tilting (D-Flip)
- Pan/Tilt Speed Min. 0.01°/sec, Max. 600°/sec
- Preset 512 ea, Auto Pan 4 ea, Pattern 3 ea
- Wide Dynamic Range (NTSC 128x, PAL 160x) : SCC-C6455/C7455
- Virtual Progressive Scan (VPS) : SCC-C6455/C7455
- Day Night Function (True), Sens-up Function (512x)
- Motion Adaptive Digital Noise Reduction (3D + 2D)
- Back Light Compensation (Area Setting)
- Advanced Motion Detection Function
- eXtended Dynamic Range (XDR)
- Privacy Mask Function (12ea)
- DIS (Digital Image Stabilization)
- Time & Day Scheduling
- CCVC (Camera Control Via Coaxial cable, Controller : SCX-RD100)
- RS-485 (Half/Full)/RS-422 Control (Multi-Protocol support)
- Multi-Language OSD (E, F, G, S, I, J, R, P, C, etc) support
- Intelligent Video (Moved / Fixed / Fence / Tracking)
- Alarm Input 8 ea, Output 3ea
- Operating Temp. : SCC-C6453 / C6455 (-10 ~ 50°C)
SCC-C7453 / C7455 (-50 ~ 50°C)

I Dimensions (mm)

SCC-C6453 / C6455



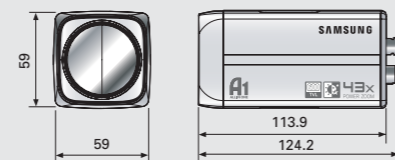
SCC-C7453 / C7455



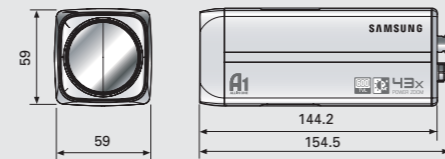
SCC-C4253 / C4255 / C4353 / C4355

- SCC-C4253/C4353 : 1/4" Super HAD IT CCD
- SCC-C4255/C4355 : 1/4" Ex-View HAD PS CCD
- 43x(f=3.2~137.6mm) Optical & 16x(0.1step) Digital Zoom
- High Resolution : 600 TV Lines
- Min. illumination 0.0007 Lux (F1.2, 15 IRE, Sens-up 512x, Color)
0.00007 Lux (F1.2, 15 IRE, Sens-up 512x, B/W)
- Wide Dynamic Range (NTSC 128x, PAL 160x) : SCC-C4255/C4355
- Virtual Progressive Scan (VPS) : SCC-C4255/C4355
- Day Night Function (True), Sens-up Function (512x)
- Motion Adaptive Digital Noise Reduction (3D + 2D)
- Back Light Compensation (Area Setting)
- Advanced Motion Detection Function
- eXtended Dynamic Range (XDR)
- Privacy Mask Function (12 ea)
- DIS (Digital Image Stabilization)
- CCVC (Camera Control Via Coaxial cable, Controller: SCX-RD100)
- RS-485 (Half) Control (Multi-Protocol support)
- Multi-Language OSD (E, F, G, S, I, J, R, P, C, etc) support
- Intelligent Video (Moved / Fixed / Fence / Tracking)
- Preset 512ea, Alarm Output 1ea
- SCC-C4253 / C4255 : DC12V
- SCC-C4353 / C4355 : AC24V/DC12V

SCC-C4253 / C4255



SCC-C4353 / C4355



43x ZOOM CAMERA

SCC-C6453/C6455/C7453/C7455
SCC-C4253/C4255/C4353/C4355

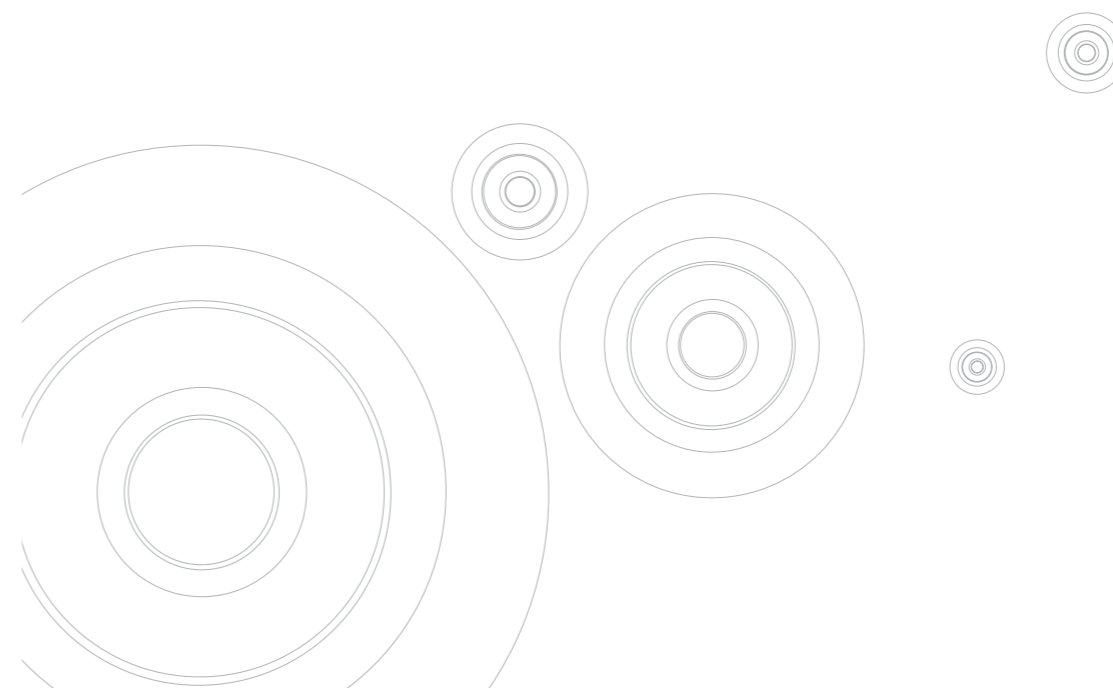


SAMSUNG ELECTRONICS CO., LTD.

416, Maetan 3 Dong, YeongTong-Gu, Suwon City, Gyeonggi-Do, Korea, 443-742
Tel: +82-31-277-3342~3347 Fax: +82-31-277-6597 http://www.samsungsecurity.com

* Design and specifications are subject to change without notice

Distributed by



Easy Installation!



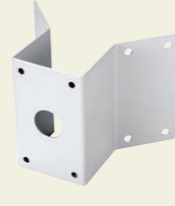
I Accessories



Wall Mount
SCX-300WM



Ceiling Mount
SCX-300CM



Corner Mount
SCX-300KM



Parapet Mount
SCX-300LM



Pole Mount
SCX-300PM



Hanging Mount
SCX-300HM



Flush Mount
SCX-DF300W

I Variable Mounting Options

Surface Mounting (In-ceiling cabling)



Flush Mounting (Indoor Application)



Wall Mounting with Pole Mount



Ceiling Mounting



Wall Mounting with Corner Mount



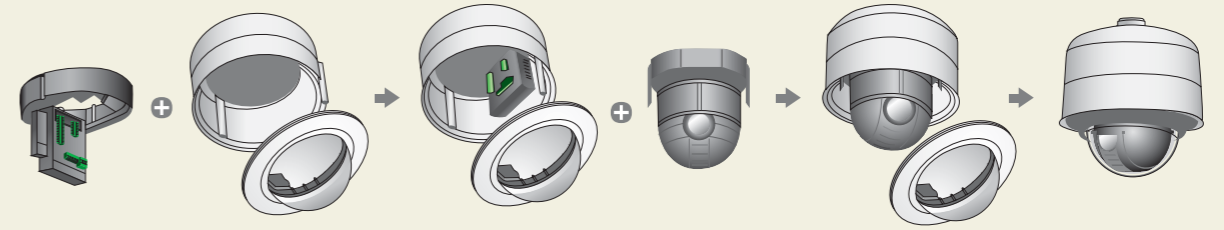
Parapet Mounting (Outdoor Application)



Wall Mounting

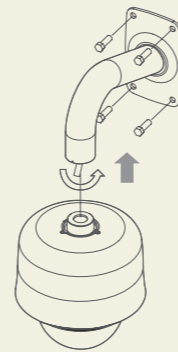


I Easy Installation

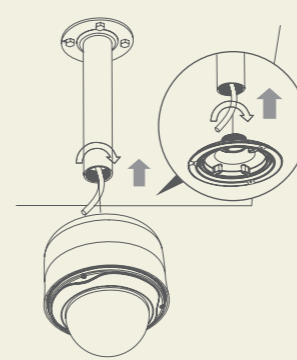


I Housing Easy Installation

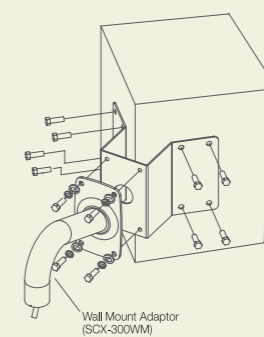
Wall Mounting



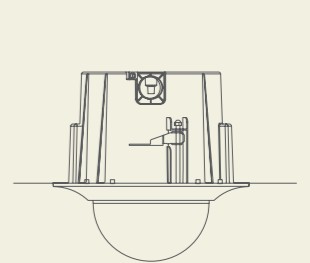
Ceiling Mounting



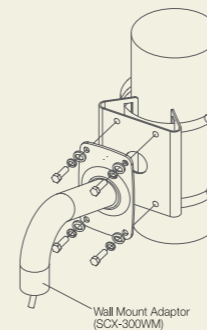
Wall Mounting with Corner Mount



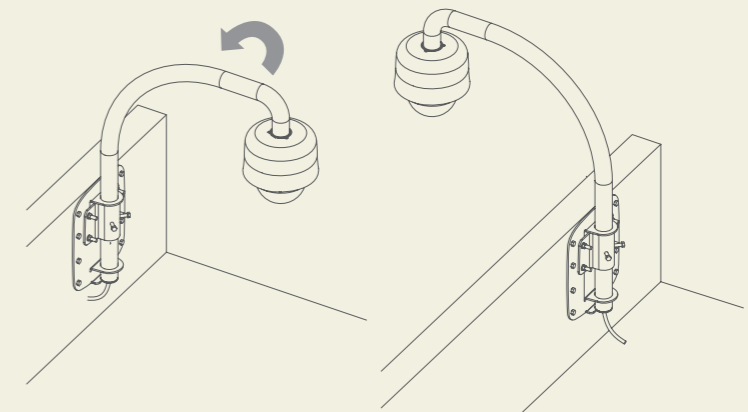
Flush Mounting



Wall Mounting with Pole Mount



Parapet Mounting



43x Optical Zoom High SmartDome Camera



I Specifications

Items	Sub-items	SCC-C6453/C7453	SCC-C6455/C7455	
Camera Type	Color/BW	Color		
Image	Device	1/4" Super HAD IT CCD	1/4" Ex-View HAD PS CCD	
	Pixels	768 X 494 (NTSC) / 752 X 582 (PAL)		
Resolution	Horizontal	600 (Color) TV Lines		
Min. Scene Illumination	Color	Sens-up Off	0.6Lux(15IRE), 1.2Lux(30IRE), 2Lux(50IRE)	
		Sens-up 512x	0.001Lux(15IRE), 0.002Lux(30IRE), 0.004Lux(50IRE)	
	B/W	Sens-up Off	0.06Lux(15IRE), 0.12Lux(30IRE), 0.2Lux(50IRE)	
		Sens-up 512x	0.0001Lux(15IRE), 0.0002Lux(30IRE), 0.0004Lux(50IRE)	
Pan/Tilt	Speed	Manual Pan	0.01"/sec ~ 180"/sec	
		Preset Pan	600"/sec	
		Manual Tilt	0.01"/sec ~ 180"/sec	
		Preset Tilt	600"/sec	
	Range	Panning	0°~360° (Endless)	
		Tilting	-6°~186°	
	Number of Auto PAN		4 ea	
	Number of Preset		512 ea	
	Number of Pattern		3 ea	
	Functions	Number of Privacy Zone		12 ea
Day/Night		Auto / Day / Night (ICR)		
Motion Detection		Yes, Sensitivity 1~7 Level		
Wide Dynamic Range		- / Yes (NTSC : 128x, PAL : 160x)		
D-Zoom		Yes (~16x)		
High Speed Shutter		1/100~1/10K sec		
Sens Up		Yes (2x ~ 512x)		
BLC		Off / On		
AGC		Off/On (Very Low / Low / Mid / High / Very High / User / Fix)		
Auto Focus		Manual / Auto (pan, tilt, zoom linked) / one AF		
Synchronization		Internal / Line lock		
Camera ID		Max 54 Character, 2 Line		
VPS (Virtual Progressive Scan)		- / Yes		
XDR (eXtended Dynamic Range)		Off/On (Low/Middle/High)		
DNR (Digital Noise Reduction)		Off/On (Low/Middle/High/User(3D/2D))		
Schedule		Day / Time Schedule		
White Balance		ATW1 / ATW2 / AWC(Manual) / 3200 / 5600		
Video Output		VBS 1.0Vp-p	VBS 1.0Vp-p	
S/N Ratio	S/N Ratio	52 dB		
Lens	Focal Length	3.2 ~ 138.5mm		
	Min. Object Distance	1000mm		
	Zoom Ratio	43x Optical (688x with 16x Digital zoom)		
	Aperature Ratio	F1.65(W)/F3.7(T)		
	Viewing Angle	Tele	1.47° (H) x 1.10° (V)	
		Wide	61.22° (H) x 47.16° (V)	
	Lens Drive Type	DC Auto Iris		
Mount Type	Board-in type			
OSD	OSD	Yes		
Alarm	Input	8 ea		
	Output	3 ea (2 Open Collector, 1 relay)		
Remote Control	Remote Control	RS485 (Half/Full Duplex) / RS422, CCVC		
Environmental Conditions	Operating Temperature	SCC-C6453/C6455 : -10°C ~ +50°C, SCC-C7453/C7455 : -50°C ~ +50°C		
	Operating Humidity	Less than 90%		
Power	Power Requirement	24 VAC		
	Power Consumption	11W(SCC-C7453/C7455 Camera with Fan/Heater : 47W)		
	LED Indicator	Yes		
Physical Specification	Dimensions (WxHxD)	SCC-C6453/C6455 : 180 X 220 mm, SCC-C7453/C7455 : 215 X 270 mm		
	Weight	SCC-C6453/C6455 : 2.0kg, SCC-C7453/C7455 : 3.0kg		
	Color	Light Gray		



43x Optical Zoom Lens Camera



I Specifications

Items	Sub-items	SCC-C4253/C4353	SCC-C4255/C4355	
Camera Type	Color/BW	Color		
Image	Device	1/4" Super HAD IT CCD	1/4" Ex-View HAD PS CCD	
	Pixels	768 X 494 (NTSC) / 752 X 582 (PAL)		
Resolution	Horizontal	600 (Color) TV Lines		
Min. Scene Illumination	Color	Sens-up Off	0.6Lux(15IRE), 1.2Lux(30IRE), 2Lux(50IRE)	
		Sens-up 512x	0.001Lux(15IRE), 0.002Lux(30IRE), 0.004Lux(50IRE)	
	B/W	Sens-up Off	0.06Lux(15IRE), 0.12Lux(30IRE), 0.2Lux(50IRE)	
		Sens-up 512x	0.0001Lux(15IRE), 0.0002Lux(30IRE), 0.0004Lux(50IRE)	
Functions	Number of Privacy Zone		12 ea	
	Day/Night		Auto / Day / Night (ICR)	
	Motion Detection		Yes, Sensitivity 1~7 Level	
	Wide Dynamic Range		- / Yes (NTSC : 128x, PAL : 160x)	
	D-Zoom		Yes (~16x)	
	High Speed Shutter		1/100 ~ 1/10K sec	
	Sens Up		Yes (2x ~ 512x)	
	PIP		Yes	
	BLC		Off / On	
	AGC		Off/On (Very Low / Low / Mid / High / Very High / User / Fix)	
	Auto Focus		Manual / Auto / one AF	
	Synchronization		SCC-C4253 / C4255 : Internal, SCC-C4353 / C4355 : Internal / Line Lock	
	Camera ID		Max 54 Character, 2 Line	
	VPS (Virtual Progressive Scan)		- / Yes	
	XDR (eXtended Dynamic Range)		Off/On (Low / Middle / High)	
	DNR (Digital Noise Reduction)		Off / On (Low / Middle / High / User(3D/2D))	
	Schedule		Day / Time Schedule	
	White Balance		ATW1 / ATW2 / AWC(Manual) / 3200 / 5600	
Video Output	VBS 1.0Vp-p	VBS 1.0Vp-p		
S/N Ratio	S/N Ratio	52 dB		
Lens	Focal Length	3.2 ~ 138.5mm		
	Min. Object Distance	1000mm		
	Zoom Ratio	43x Optical (688x with 16x Digital zoom)		
	Aperature Ratio	F1.65(W)/F3.7(T)		
	Viewing Angle	Tele	1.47° (H) X 1.10° (V)	
		Wide	61.22° (H) X 47.16° (V)	
	Lens Drive Type	DC Auto Iris		
Mount Type	Board-in type			
OSD	OSD	Yes		
Alarm	Input	-		
	Output	1 ea		
Remote Control	Remote Control	RS485, CCVC		
Environmental Conditions	Operating Temperature	-10°C ~ +50°C		
Conditions	Operating Humidity	Less than 90%		
Power	Power Requirement	SCC-C4253/C4255 : DC12V, SCC-C4353/C4355 : DC12V, AC24V		
	Power Consumption	SCC-C4253 : 4.2W / SCC-C4353 : 5.6W	SCC-C4255 : 4.2W / SCC-C4355 : 5.6W	
	LED Indicator	Yes		
Physical Specification	Dimensions (WxHxD)	SCC-C4253/C4255 : 59.0 X 59.2 X 124.2 mm, SCC-C4353/C4355 : 59.0 X 59.2 X 154.5 mm		
	Weight	SCC-C4253/C4255 : 383g, SCC-C4353/C4355 : 508g		
	Color	Silver		

