

SRD-830D

8CH, H.264, 30fps @ D1, DVD



Summary

Providing broadest range of features, including the most robust H.264 compression method, up to 10TB of massive storage capacity inside, audio recording, diverse search methods, and DVR-to-Client architecture, Samsung's SRD offers optimum performance for digital video recording solution.

Features

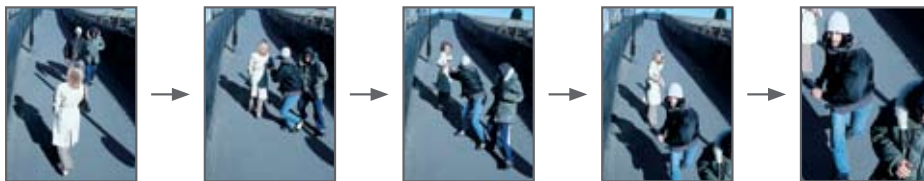
- 8ch DVR
- Video (H.264) / Audio (ADPCM)
- Up to 120 FPS recording rate
- Up to 4ch audio inputs and 1ch audio output
- Combined BNC and VGA video output for main display (up to 1280 x 1024)
- SRD-830D : MAX 5 internal HDD (HDD x 5)
- HDD & DVD SATA interface
- DDNS
- Built-in web viewer
- DVD R/W
- Event notifications by E-mail

H.264

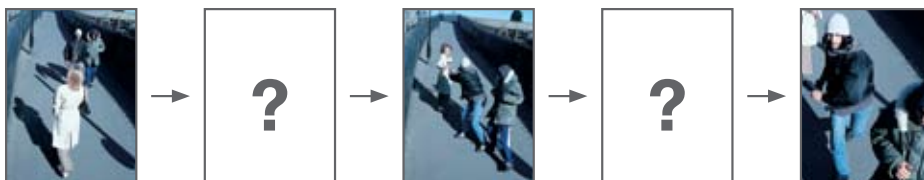
Using the H.264 standard for video compression, SAMSUNG cameras capture exceptionally crisp motion while cutting the file size by up to 50%. This means saving money on storage without sacrificing in video quality.



Full D1 Real-time Frame Rate



30 frame/sec @ D1 Resolution



Competition



SAMSUNG SECURITY | Toll Free: 888-595-2288 | Fax: 972-245-7333
This product specifications and manual are also available in pdf format at www.samsung-security.com
The information is subject to change without notice - v7.13.10

SRD-830D

SRD-830D

8CH, H.264, 30fps @ D1, DVD



Specifications

Video	Inputs	8 composite video 0.5-1 Vpp, 75 ohm automatic termination
	Resolution	704x480 NTSC
Live	Frame rate	240FPS NTSC
	Resolution	704x480 NTSC
	Multi Screen display	1/4/6/8/9/13/PIP

Performance

Operating System	Embedded	Linux	
Recording	Compression	H.264	
	Record Rate/NTSC	Up to 30FPS @ 704x480	
		Up to 60FPS @ 704x240	
		Up to 120FPS @ 352x240	
	Mode/NTSC	Manual, Schedule (Continuous/Event), Event(Pre/Post), Time lapse (0.9/1.9/3.8/7.5/15 FPS)	
	Mode/PAL	Manual, Schedule (Continuous/Event), Event(Pre/Post), Time lapse (0.8/1.6/3.1/6.2/12.5 FPS)	
	Overwrite modes	Continuous	
Pre-alarm	Up to 30 sec. (5,10,20,30 Sec)		
Search & Playback	Post-Alarm	Up to 6 hour. (5,10,20,30 sec,1,3,5,10,20 min,1,2,3,4,5,6hour)	
	Search mode	Date/time, Event, Back up, Pos, Motion (*All Search Included Prview Function)	
	Playback function	Fast Forward/Backward, Slow Forward/Backward, Step Forward/Backward	
Network	Transmission speed	Up to (4Mbps, Unlimited(4M)/2/1.5/1 Mbps/800/600/500/400 /300/200/100/50 kbps	
	Bandwidth control	Automatic	
	Multi Stream	H.264(4CIF/CIF)	
	Remote users Maximum	Search(3)/Live Unicast(10)/Live Multicast(20)	
	Protocol support	TCP/IP, DHCP, PPPoE, SMTP, NTP, HTTP, DDNS, RTP, RTSP	
	Monitoring	Net-I Viewer, SVM-S1, Smart viewer, Webviewer	
Storage	Internal HDD	MAX 5 internal HDD (HDD x 5)	
	External HDD	Up to 2 expansion bay(up to 4 HDD each)	
	DVD Writer (Back-up)	YES	
	USB (Back-up)	3 USB Ports	
	File Format (Back-up)	AVI, MDB(DVR Play back), EXE(include Player)	
Security	Password Protection	1Admin, 10 Group, 20 User per 1 Group, User can be assigned authority for function	
	Data Authentication	Watermark	

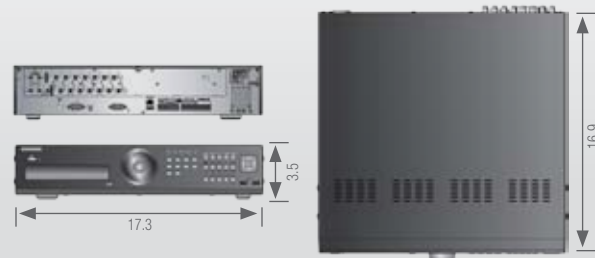
Interface

Monitors	VGA	Analog RGB 800x600, 1024x768, 1280x1024 resolution	
	HDMI	N/A	
	Main Composite	BNC, 1 Vp-p, 75 ohm	
	Spot Composite	1BNC, 1 Vp-p, 75 ohm, support Multi screen and camera title	
	Loop Outputs	8	
Audio	Inputs	4 line in	
	Output	1 line	
	Compression	ADPCM	
	Sampling rate	16KHz	
Alarm	Inputs	Terminal 8 inputs, NO/NC	
	Outputs	Terminal 4 relay outputs, NO/NC	
	Remote notification	Notification via e-mail	
Connections	Ethernet	1 RJ45 10/100/1000 Base-T	
	Serial interface	RS-232	
	PTZ control interface	RS-485	
	PTZ Keyboard	RS-485	
	USB	USB 2.0, 3 ports	
	e-SATA	N/A	
	Application Support	Mouse, Remote Controller	
Dome Protocols	Supported PTZ cameras	Samsung-E/ Samsung-T/ Pelco-D/ Pelco-p/Panasonic/ Phillips/ AD/ DIAMOND/ ERNA/ KALATEL/ VCL TP/ICON	

General

Electrical	Input Voltage	100 to 240 VAC ±10%; 50/60 Hz, Autoranging	
	Power consumption	Max. 35 W (with 1x HDD)	
		Max. 45W (with 2x HDD)	
Environmental	Operating Temperature	+32°F to +104°F (+0°C to +40°C)	
	Humidity	20%RH to 85%RH	
Mechanical	Dimensions (W x H x D)	17.3 x 3.5 x 16.9 in (440 x 88 x 430 mm)	
	Weight (2x hard disks)	Approx. 7.3 lb (16.1 kg)	
	Rack mount kit	2 EA	
Lauguage		English, Spanish, French, German, Italian, Polish, Portuguese, Russian, Turkish, Japanese, Czech, Swedish, Danish, Korean, Chinese, Netherlands	

Dimensions (unit : in) Front/Rear Panel



Certifications



SRD-830D

SAMSUNG

SAMSUNG SECURITY | Toll Free: 888-595-2288 | Fax: 972-245-7333

This product specifications and manual are also available in pdf format at www.samsung-security.com
The information is subject to change without notice - v7.13.10